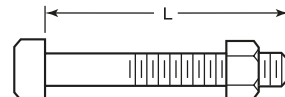
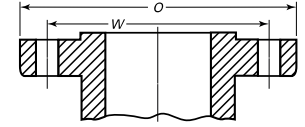


Slip-On Welding

* Referential photo



Machine Bolt With Nuts



Stud Bolts With Nuts

Point height
(Note 1)

Note 1: The length of the stud bolt does not include the height of the points

Fiorella Representaciones S.A.C. Importador y distribuidor autorizado de bridas FR en territorio latinoamericano.

Dimensions are in mm

Nominal Pipe Size, NPS		Outside Diameter of Flange (O)	Minimum Thickness of Flange, (t _f)	Diameter of Hub (X)	Length Through Hub (Y)	Bore Minimum (B)	Diameter of Bolt Circle (W)	Diameter of Bolt Holes (inch)	Number of Bolts	Diameter of Bolts (inch)	Length of Bolts (L)		
											Stud Bolts		Machine Bolts
inch	mm										2mm Raised Face	Ring Joint	2mm Raised Face
1/2"	12	90	9.6	30	14	22.2	60.3	5/8	4	1/2	55	...	50
3/4"	18	100	11.2	38	14	27.7	69.9	5/8	4	1/2	65	...	50
1"	25	110	12.7	49	16	34.5	79.4	5/8	4	1/2	65	75	55
1 1/4"	31	115	14.3	59	19	43.2	88.9	5/8	4	1/2	70	85	55
1 1/2"	38	125	15.9	65	21	49.5	98.4	5/8	4	1/2	70	85	65
2"	50	150	17.5	78	24	61.9	120.7	3/4	4	5/8	85	95	70
2 1/2"	63	180	20.7	90	27	74.6	139.7	3/4	4	5/8	90	100	75
3"	75	190	22.3	108	29	90.7	152.4	3/4	4	5/8	90	100	75
3 1/2"	88	215	22.3	122	30	103.4	177.8	3/4	8	5/8	90	100	75
4"	100	230	22.3	135	32	116.1	190.5	3/4	8	5/8	90	100	75
5"	125	255	22.3	164	35	143.8	215.9	7/8	8	3/4	95	110	85
6"	150	280	23.9	192	38	170.7	241.3	7/8	8	3/4	100	115	85
8"	200	345	27.0	246	43	221.5	298.5	7/8	8	3/4	110	120	90
10"	250	405	28.6	305	48	276.2	362.0	1	12	7/8	115	125	100
12"	300	485	30.2	365	54	327.0	431.8	1	12	7/8	120	135	100
14"	350	535	33.4	400	56	359.2	476.3	1 1/8	12	1	135	145	115
16"	400	595	35.0	457	62	410.5	539.8	1 1/8	16	1	135	145	115
18"	450	635	38.1	505	67	461.8	577.9	1 1/4	16	1 1/8	145	160	125
20"	500	700	41.3	559	71	513.1	635.0	1 1/4	20	1 1/8	160	170	140
22"	550	750	44.5	610	78	564.4	692.2	1 3/8	20	1 1/4	170	185	150
24"	600	815	46.1	663	81	616.0	749.3	1 3/8	20	1 1/4	170	185	150

Note [1] This dimension is for large end of hub, which may be straight or tapered. Taper shall not exceed 7 deg on threaded, slip-on, socket-welding, and lapped flanges. This dimension is defined as the diameter at the intersection between the hub taper and back face of the flange.

* Note : Dimensions, design and materials are subject to change without notice.

MAC - MMXXIII